



GREENBUSH VILLAGE APARTMENTS

EAST GREENBUSH, NY

AFFORDABLE, ACCESSIBLE LIVING
FOR ADULTS WITH DISABILITIES

**CROTCHED
MOUNTAIN**

OFFERING A LIFELONG ALLIANCE
TO PEOPLE WITH DISABILITIES

Rental Information:

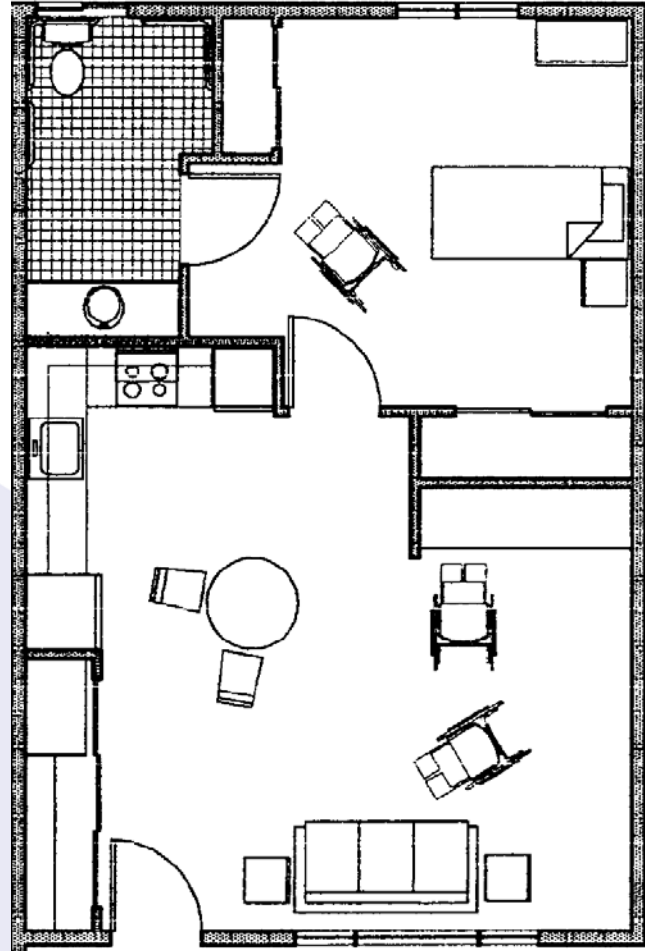
- Rent is based on 30% of a person's adjusted household income and includes heat and electricity.
- Pets are allowed if they meet policy criteria and if a security deposit is supplied.

Applicant Criteria:

- Adults with a permanent disability seeking affordable & accessibly designed living arrangements are encouraged to apply.
- Must meet US Dept of Housing & Urban Development (HUD) income eligibility requirements.

Building Features:

- Accessibly designed — built in 1998
- 22 one bedroom units; 600 sq ft
- 2 two-bedroom units; 836 sq ft
- Laundry room
- Landscaped grounds with outdoor barbeque
- Conveniently located near bus route



Typical Unit

CROTCHED MOUNTAIN is a non-profit organization serving more than 1,500 children and adults with disabilities annually through a variety of community-based programs throughout the northeast. It also operates the widely-respected rehabilitation center in Greenfield, NH on the southern slope of Crotched (*pronounced CROTCH-ed*) Mountain.

Each of the 24 Units Offers:

- Adjustable counters and stove tops
- Refrigerator/freezer and wall oven
- Pantry and storage closets
- 4'x4' roll-in showers
- Internal emergency call system
- Smoke detection/sprinkler systems
- Baseboard hot water heat with individual room thermostats
- Telephone and cable tv hook-ups
- Wall-to-wall carpeting



For more information please contact: **Greenbush Village Apartments**
Mailing Address: 25 Crotched Mountain Way, Rensselaer, NY 12144
Phone: (518) 449-0777 • **Fax:** (518) 449-0789 • **E-mail:** gva@crotchedmountain.org





DIRECTIONS TO

GREENBUSH VILLAGE APARTMENTS

EAST GREENBUSH, NY

CROTCHED MOUNTAIN

OFFERING A LIFELONG ALLIANCE
TO PEOPLE WITH DISABILITIES

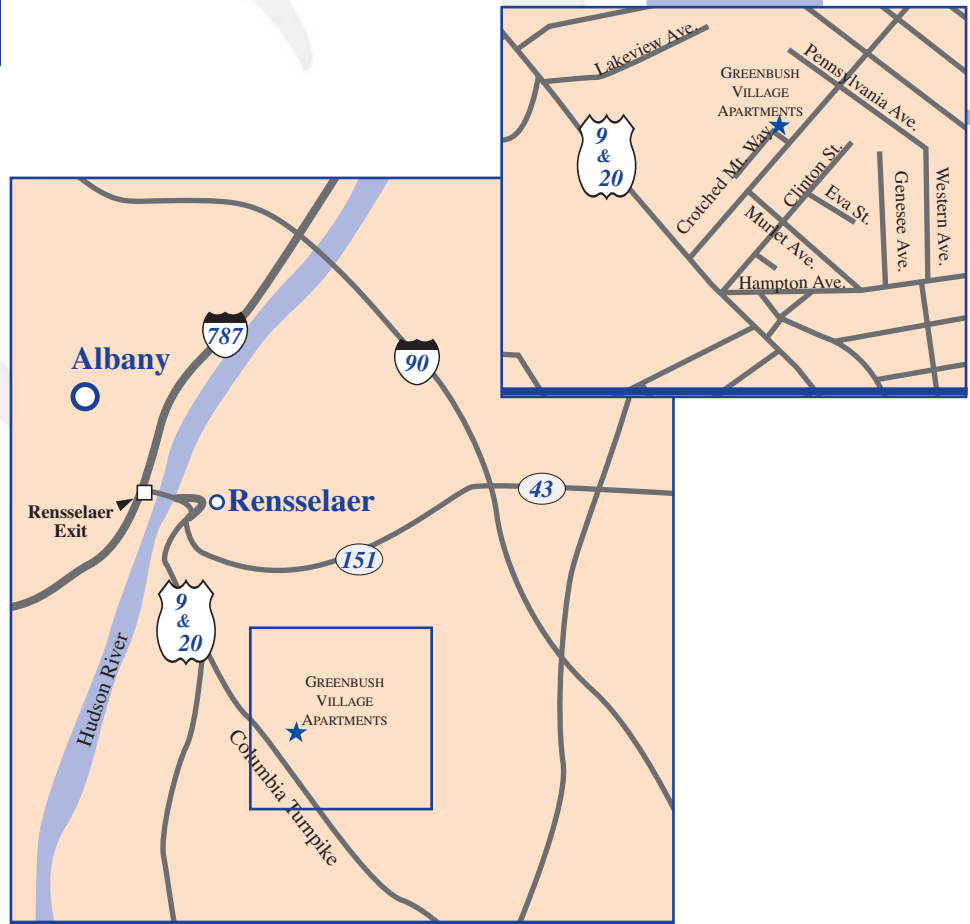
EAST GREENBUSH, NY, population 16,000, is a thriving residential community adjoining the city of Albany, NY. It lies in between the Taconic Mountain Range to the east, and the Hudson River to the west.

Residents can choose from a number of regional human service agencies. Public transportation offers easy access to area businesses, shopping centers, medical facilities, as well as educational and cultural resources.



From Interstate 787:

- Take the Rensselaer Exit – cross the Hudson River and follow the signs for East Greenbush
- Take the East Greenbush Exit – you are now on Columbia Turnpike (Routes 9 & 20)
- Continue approximately 1 mile until you arrive at a traffic light by St. Mary's Church and Kmart
- Turn left at the next traffic light by the Rockefeller Funeral Home onto Sherwood Avenue
- The apartment entrance will be just ahead on your left on Crothed Mountain Way



For more information please contact: **Greenbush Village Apartments**
Mailing Address: 25 Crothed Mountain Way, Rensselaer, NY 12144
Phone: (518) 449-0777 • **Fax:** (518) 449-0789 • **E-mail:** gva@crotchedmountain.org

