



## CROTCHED MOUNTAIN

OFFERING A LIFELONG ALLIANCE  
TO PEOPLE WITH DISABILITIES

# MCINTYRE SCHOOL APARTMENTS

## WHITEFIELD, NH

AFFORDABLE, ACCESSIBLE LIVING  
FOR ADULTS AGE 62 AND OLDER

### Rental Information:

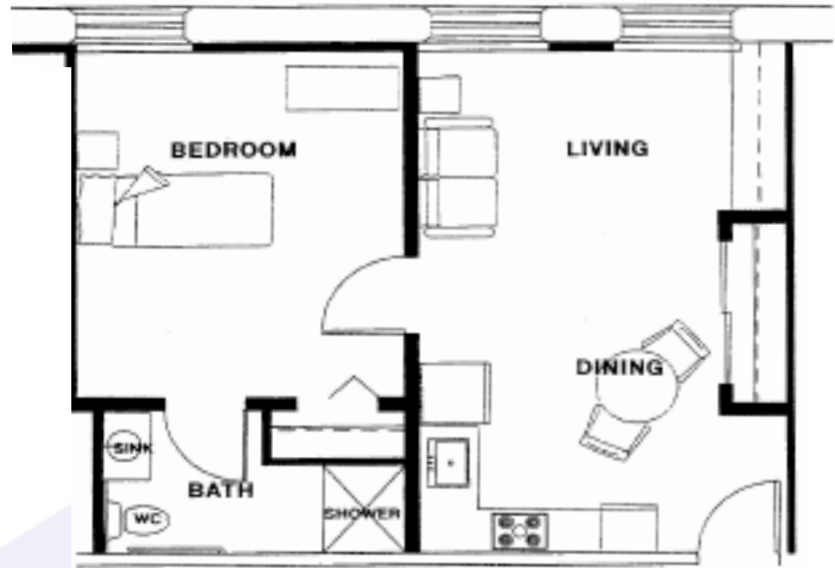
- Rent is based on 30% of a person's gross household income and includes heat and electricity.
- Pets are allowed if they meet policy criteria and if a security deposit is supplied.
- Our Service Coordinator can act as broker between individual tenants and local human service agencies — available at no additional charge.

### Applicant Criteria:

- Adults, age 62 and older, who are seeking affordable and accessibly designed living arrangements are encouraged to apply. For couples, younger spouses are exempt from the age requirement.
- Must meet US Dept of Housing & Urban Development (HUD) income eligibility requirements.

### Building Features:

- Built in 1934; fully renovated in 1996
- Elevator access to all five levels
- Common laundry and storage areas
- Computer room with Internet access
- Studio guest apartment for family and friends
- Spacious auditorium with kitchen available for tenants and local organizations
- Accessible entrance with intercom



Typical Unit

### Each of the 24 Units Offers:

- Refrigerator/freezer; electric range
- Storage: closets, pantry, cabinets
- Wall-to-wall carpeting
- Telephone and cable tv hook-ups
- Baseboard hot water heat with individual unit thermostats
- Internal emergency call system
- Smoke detection/sprinkler systems
- Additionally, 4 "wheelchair friendly" apartments have: adjustable counters and stoves; wall ovens; and 4' x 4' roll-in showers

CROTCHED MOUNTAIN is a non-profit organization serving more than 1,500 children and adults with disabilities annually through a variety of community-based programs throughout the northeast. It also operates the widely-respected rehabilitation center in Greenfield, NH on the southern slope of Crotched (*pronounced CROTCH-ed*) Mountain.



For more information please contact: (800) 495-7731

McIntyre School Apartments • 16 Highland Street, Whitefield, NH 03598

Phone: (603) 837-2511 • Fax: (603) 837-2496 • E-mail: [mcintyre@crochedmountain.org](mailto:mcintyre@crochedmountain.org)





## DIRECTIONS TO

# MCINTYRE SCHOOL APARTMENTS

## WHITEFIELD, NH

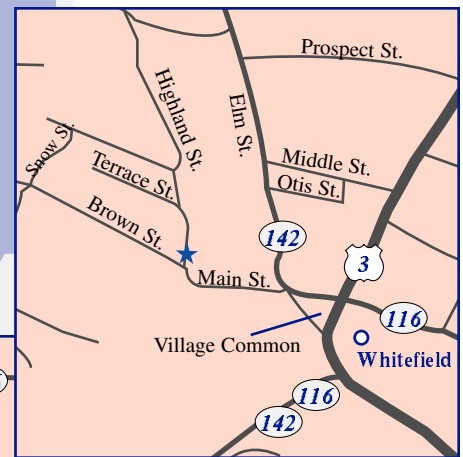
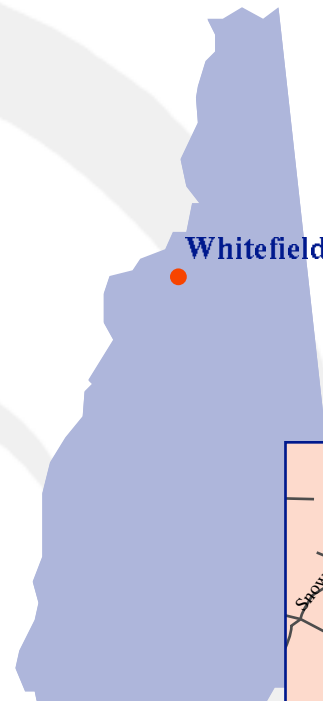
**CROTCHED MOUNTAIN**

OFFERING A LIFELONG ALLIANCE  
TO PEOPLE WITH DISABILITIES

WHITEFIELD, NH, population 2,000, is located on the northern edge of the White Mountains, half way between the towns of Lancaster and Littleton, NH. Its picturesque town common, featured in *National Geographic*, offers a variety of seasonal activities such as flea markets, pancake breakfasts, and ice skating.

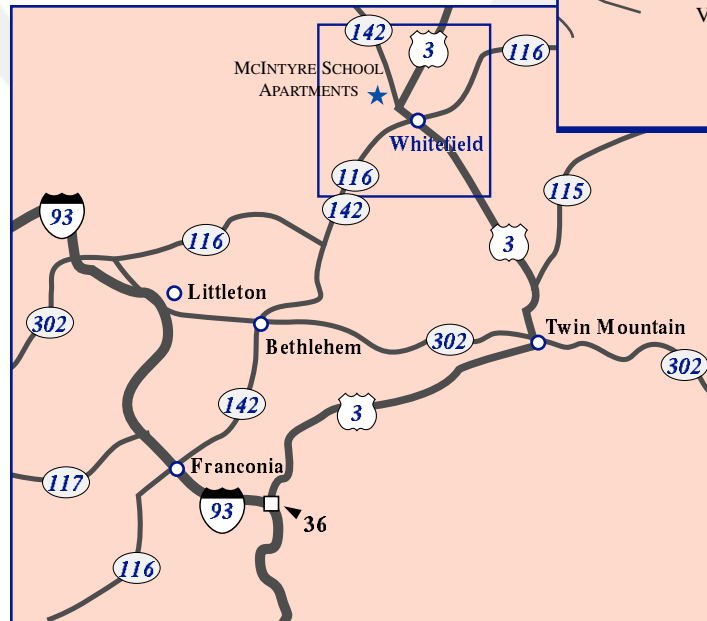
In keeping with its small town image, Whitefield is home to a variety of shops, inns, churches, a senior center and a public library. Residents have convenient access to a network of human services . . . *including transportation*.

Local attractions include the Weathervane Theatre, Forest Lake State Park, Mt. Washington Regional Airport, and a 9-hole golf course adjoining the historic Mountain View House.



### From I-93:

- Take I-93 to Exit 36
- Go 28 miles north on Route 3
- Bear left at the Village Common and turn left onto Main Street
- Turn right onto Highland Street
- The entrance will be ahead on your right



For more information please contact: (800) 495-7731

McIntyre School Apartments • 16 Highland Street, Whitefield, NH 03598

Phone: (603) 837-2511 • Fax: (603) 837-2496 • E-mail: [mcintyre@crotchedmountain.org](mailto:mcintyre@crotchedmountain.org)



Revised 07/03